

**MobilityDogs®**

LIFE CHANGING LOYALTY



IMPACT REPORT  
**2024**

 1 APR 23 – 31 MAR 24



# IMPACT REPORT 2024

1 APR 23 – 31 MAR 24

## CONTENTS

- 3 Our core values
- 4 From the desk of our Chairperson
- 5 Snapshot of 2023-2024
- 6 Understanding what we do
- 7 Location of our dogs
- 8 Real life stories
- 12 Our wonderful volunteers
- 13 Puppies in Prison™
- 14 Meet our Board | Acknowledging our supporters
- 16 Financial Summary 2023–2024



# Our Core VALUES

## OUR MISSION

To enhance the lives of people living with disabilities, increasing independence, confidence, self esteem and participation in New Zealand communities.

## OUR VISION

To provide Mobility Dogs to everyone in New Zealand who would benefit from being partnered with one.

## OUR PURPOSE

To have a positive impact on the lives of people living with a disability.

Life  
Changing  
Loyalty



Dogs at  
work, people  
at our core.



## FROM THE DESK OF OUR **CHAIRPERSON**

Kathy Peake

I am privileged to be Chair of Mobility Assistance Dogs Trust.

The last financial year has been successful as we continue to enhance the wellbeing and independence of all New Zealanders through the diversification of our programmes proudly raising and training Mobility, Court, Therapy, Companion, School and Dental Dogs.

Despite strong support, funding remains a challenge due to the number of charities, the current economic situation and rising cost of living. While we value all donations, grants and bequests, special thanks go to the Lindsay Foundation, Chillisoft, Lion Foundation, Foundation North, and the Joyce Fisher Charitable Trust for their ongoing support.

This year we placed 9 dogs across New Zealand: 3 Mobility Dogs for individuals with physical disability, 4 Companion Dogs, 1 Court Dog and 1 School Dog. The latter is near the end of its six-month pilot study and once this is fine-tuned, we expect more schools to come on board in the coming year. We aim for 10-12 placements annually and anticipate an increase with our expanded range of services.

We manage 62 placed dogs, have 17 in training (with the arrival of 6 more puppies imminent), and 8 dogs in our Puppies in Prison programme at Wiri Women's prison.

Our General Manager, Jody Wilson, notes that the number of dogs placed does not reflect their impact. One dog changes many lives with the marked ripple effect on the family, support network and community. This is also a tangible impact on mental health and general well-being.

We are incredibly fortunate to be one of only 3 service dog organisations in New Zealand accredited by Assistance Dogs International, "the global authority in the Assistance Dogs industry", and we continue to strive to exceed these standards.

Assistance Dogs International and the International Guide Dog Federation, cognisant of the emotional capacities of dogs, have strengthened their commitment to the health, welfare and ethical treatment of Service Dogs by all member programs. At Mobility Dogs, the welfare and well-being of our dogs is central to our mission.

As the only Service Dog organisation involved in the New

Zealand Court Dog programme, we have three Court Dogs placed in Auckland and Tauranga, with another recently signed up. This could not be possible without the support and relationship with the founding body Courthouse Dogs in the USA.

New developments include: Establishing the Mobility Dogs Investment Trust to enhance our fiscal responsibility and accountability, with thanks to Hamilton Locke for their pro bono work. Welcoming our first fundraiser to boost our funding and marketing efforts.

Announcing that Robyn Scott-Vincent has joined our team as Trustee. Robyn, as Founder, Director and Executive Producer of Attitude Pictures Ltd and [attitudelive.com](http://attitudelive.com), brings invaluable experience from both disability and commercial sectors.

Finally, a huge thank you to our team. Though small, we are mighty, and the commitment of our General Manager, Canine and Administration teams, Board members (voluntary), and volunteers make our life changing work possible. Special thanks to those who breed and assist us acquire the best puppies for our clients.

# Our Year in NUMBERS



## SNAPSHOT OF 2023-2024



Thank you for supporting us!



Find out  
**MORE**

## UNDERSTANDING WHAT WE DO



We train assistance dogs to help people with disabilities to lead more independent lives.



We manage a prison programme that supports the rehabilitative goals of prisoners.



We manage four puppy raising communities in Auckland, Whangarei, Hamilton and Southern Lakes.



We train therapy dogs and their specialist handler to work in a clinical environment.



We place companion dogs in families who face challenges.



We have our dogs raised in or working in three courts.



We continue to support our clients for the lifetime of their Mobility Dog.



We seek new ways that Mobility Dogs can help people.



### Quality

Guided by our accreditation with Assistance Dogs International, we commit to achieving high standards and best practice together with ensuring the health and wellbeing of all our dogs.

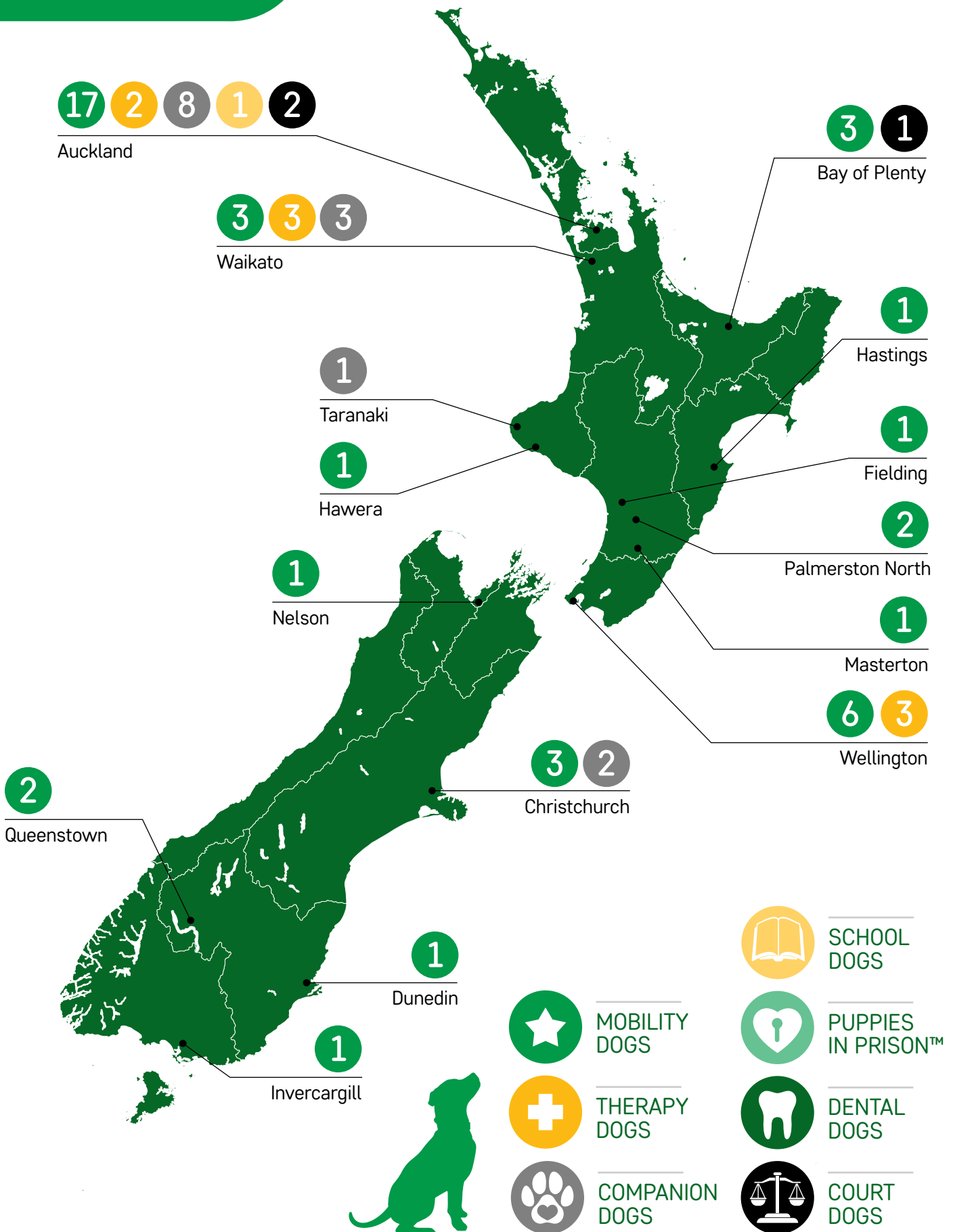
### Collaboration

We work together with other organisations to advance our collective knowledge for the benefit of all New Zealanders.

### Funding

We commit to spending funders money wisely through efficiency, impact and focus.

# Location of OUR DOGS



## EMBRACING LIFE WITH WILMA CASEY'S STORY

Six years ago, at just 17, Casey Calder found himself paralysed from the chest down following a car accident.

Fast forward to May 2023, and Casey's life took an unexpected turn when he was paired with Wilma, a golden Labrador from Mobility Dogs. Wilma swiftly became the beacon of light Casey hadn't realised was missing, bringing a remarkable change to his world.

His friends and family have wholeheartedly embraced the profound bond between him and Wilma. Unexpectedly, Wilma has sparked increased connections with other family members who also own dogs, fostering lots of puppy playdates and shared walks.

For Casey, venturing into public spaces had previously been a challenge, with some anxiety and the discomfort of being the focus of stares due to his wheelchair. Wilma offers him a positive distraction that significantly alleviates his anxiety. With Wilma by his side, the shift in attention from him to his canine companion has been a welcome change.

Despite this, Wilma's invaluable assistance shines through. Simple tasks like retrieving dropped items, once a source of worry and inconvenience for Casey, have become manageable and less anxiety-inducing, thanks to Wilma's ability to lend a helping hand.

Observing her unrestrained happiness during free runs and playful interactions with other dogs is a constant source of delight for him. Casey also treasures Wilma for her remarkable ability to bring laughter into his life, even when he least expects it.

When asked about Wilma's personality, Casey says she's a perpetually cheerful soul, always eager to help and ever-curious about her surroundings. Her zest for life shines through in her favourite pastimes: playing, swimming and indulging at meal times.

When Casey was asked about the significance of Wilma in his life, his heartfelt response was simple yet profound: "She gives me life and purpose."



Above: Casey and his Mobility Dog, Wilma.



**"Wilma has impacted my life in only positive ways, giving me purpose of responsibility, love, joy and happiness, I didn't know existed prior."**

**CASEY CALDER**



## HOLLY THE CANINE COURT COMPANION



One victim shared,  
“When I met Holly,  
I knew I could do it.”

In Auckland’s Waitakere Courts, Holly, a Mobility Dog, along with her handler Karen, is making a difference by offering comfort in a tense environment.

Holly’s role is simple but impactful. She visits people in the courthouse, providing comfort, especially for those who may be uneasy around dogs. Her main goal is to ensure everyone feels at ease, using her instinct to recognize who needs extra care.

During emotionally charged court sessions, Holly’s presence is invaluable. When commanded to “visit,” she moves through the room, offering comfort. She knows when to position herself between someone’s knees for a hug, providing reassurance in what can be a stressful setting. One victim shared, “When I met Holly, I knew I could do it.” Even the judge acknowledges her as an important source of support.

When Holly first joined, she was shy and timid, but now, as a working dog, she’s confident and professional. Off-duty, she’s a playful pup, enjoying zoomies and occasional mischief.



Holly’s calming effect is undeniable. While not everyone loves dogs, her ability to bring comfort and support in the courtroom is clear. In Auckland, Holly symbolises hope and compassion in the justice system, making difficult situations a little easier for all involved.

Above: Holly the Court Dog wearing her backpack that contains her business cards, a hairbrush and other things to keep nervous hands busy.

Life  
Changing  
Loyalty

## MILO: A DOG WITH A VERY IMPORTANT JOB

Meet Milo, a Labrador x Golden Retriever, who celebrated his second birthday in May. He is the first-ever Therapy Dog from Mobility Dogs to be placed in a school setting, at Waikowhai Intermediate School in Auckland.

Milo supports students in three key ways. He works alongside teacher aides, helping students with emotional regulation and schoolwork. He also offers

literacy support, providing a safe space for students to practice reading aloud, boosting their confidence. Additionally, he assists the school counsellor, offering comfort and companionship to students in need.

Living with a teacher at the school, Milo has formed a close bond with the community, enhancing his impact.

Principal David King sees Milo as a valuable tool for both teacher aides and the school's counselling team, fostering positive change in students' lives.

Milo's pioneering role has sparked excitement at other schools, inspiring the possibility of more Therapy Dogs supporting students throughout New Zealand.



Left: Milo supporting students at Waikowhai Intermediate School in Auckland.



Milo's pioneering role has sparked excitement at other schools, inspiring the possibility of more Therapy Dogs supporting students throughout New Zealand.

## A PUPPY RAISER'S JOURNEY WITH MOBILITY DOGS

Decades ago, I dreamed of becoming a puppy raiser, but life and my husband's belief that I couldn't part with the pup put that on hold. Years later, an article reignited that dream, and fate intervened. While at a physio clinic, we met a sad-looking Labrador in need of a raiser. My husband's humorous quip broke the ice, and soon we were taking steps to bring Jack, our first puppy, home.

When Jack left, we reached out to Mobility Dogs, inspired by Dog Squad: Puppy School. Veronica, a trainer, assessed our property, and two weeks later, Annie arrived. Now a service dog in Dunedin, Annie was followed by Mia, Kelly, and most recently, Hana, a lively black Labrador.

Raising these puppies is a team effort, guided by Mobility Dogs' trainers who help us prepare the pups for their future roles. Training takes us to bustling malls, parks, and coffee shops, building confidence amid distractions. Generous sponsors cover food, vet care, and supplies, so we can focus on shaping capable service dogs.

When asked how I let them go, I remind myself, "This is not



Above: Linda Patten with Mobility pup, Rex.

my dog." The pride comes in knowing these dogs transform lives, offering independence and companionship.

The greatest reward is hearing how a dog we raised made life easier for someone. With my husband by my side, this journey has brought joy, friendship, and the privilege of being part of something life-changing.



**"The pride comes in knowing these dogs transform lives, offering independence and companionship".**

LINDA PATTEN

# Making a DIFFERENCE



Thank you to our volunteers who are the heart of Mobility Dogs.

## OUR WONDERFUL VOLUNTEERS

The incredible volunteers at Mobility Dogs are the heart and soul of the organisation. From puppy raising and boarding to fundraising and beyond, they embody unwavering dedication and boundless compassion. With their selfless contributions, they help transform adorable puppies into life-changing companions for those in need.

These remarkable individuals tirelessly work behind the scenes, giving their time, energy, and love to support our mission. They are the driving force that enables Mobility Dogs to empower individuals with disabilities. We are endlessly grateful for their commitment, and their impact reverberates through the lives they touch.

We are gifted an incredible number of volunteer hours each week.



**41** PUPPY RAISERS



WHO SPEND



**6,794** HOURS P/WK

caring for Mobility Dog Puppies 24/7 in their homes

**8** DOGS IN PRISON  
365 days per year



## A WIN-WIN PARTNERSHIP

**puppies<sup>®</sup>**  
in prison

Since 2008, Mobility Dogs has partnered with the Department of Corrections on the Puppies in Prisons programme. Wahine prisoners at ARWCF (Auckland Region Women's Correctional Facility) in Auckland NZ are educated on how to train Mobility Dogs who will be partnered with people living with disability.

Prisoners value the sense of purpose the programme offers and develop skills that are invaluable to their rehabilitation. These include self-discipline, empathy, reporting, teamwork and leadership. Staff working with prisoners see the difference it can make to those involved.

Prisoners develop pro-social behaviours, build self-esteem, and gain a sense of responsibility and respect.

"I just wanted to say thank you. You won't realise just how much this has helped me... The gift we receive when we get a dog is: loyalty, protection, great listeners, huge willingness to help any time and best of all, unconditional lifelong friendship." Quote from a prisoner.



Above: Auckland Trainer Sarah, with Lola at ARWCF.



"The gift we receive when we get a dog is: loyalty, protection, great listeners, huge willingness to help any time and best of all, unconditional lifelong friendship."

PRISONER

# Our PEOPLE

## MEET OUR BOARD

### CHAIRPERSON, MOBILITY ASSISTANCE DOGS TRUST

Kathy Peake BSc, DVCS, DLDT

### Trustees

Suzie Mudge MSc, PhD

Troy Kennedy CA

Gregory Shanahan LL.M (Hons)

Robyn Scott-Vincent MNZM

### DEPUTY CHAIRPERSON

Karen Elliott

BSc Molecular Biology

### Patrons

Dame Anne Salmond DBE,

FRSNZ, FBA

Sir Bob Harvey KNZM, QSO



## ACKNOWLEDGING OUR SUPPORTERS

Our heartfelt thanks to the many philanthropic organisations who make our work possible.

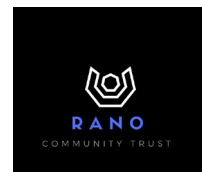


Thank  
YOU

# ACKNOWLEDGING OUR SUPPORTERS



JM Thompson Trust



Because you support us, whether through donations to our special appeals, regular monthly donations, workplace giving or other fundraising efforts, you are helping provide positive outcomes for people living with a disability throughout New Zealand.

## STATEMENT OF FINANCIAL PERFORMANCE

For the year ended 31 March 2024

### REVENUE

Donations, fundraising and similar revenue	\$438,944
Revenue from providing goods or services	\$62,015
Interest, dividends and other investment revenue	\$46,663
Other revenue	\$100
<b>Total revenue</b>	<b>\$547,722</b>

### EXPENSES

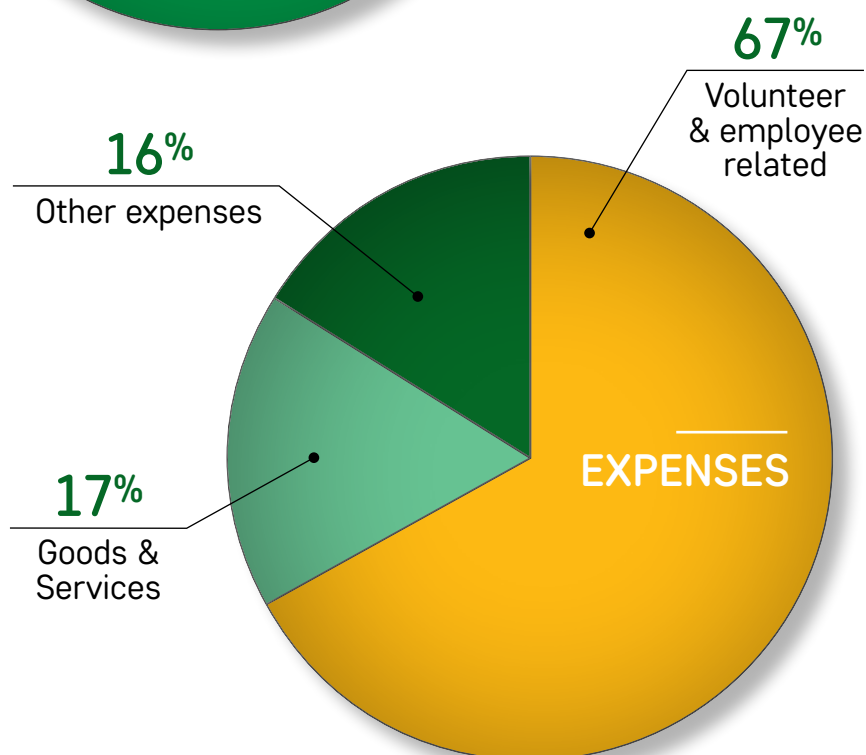
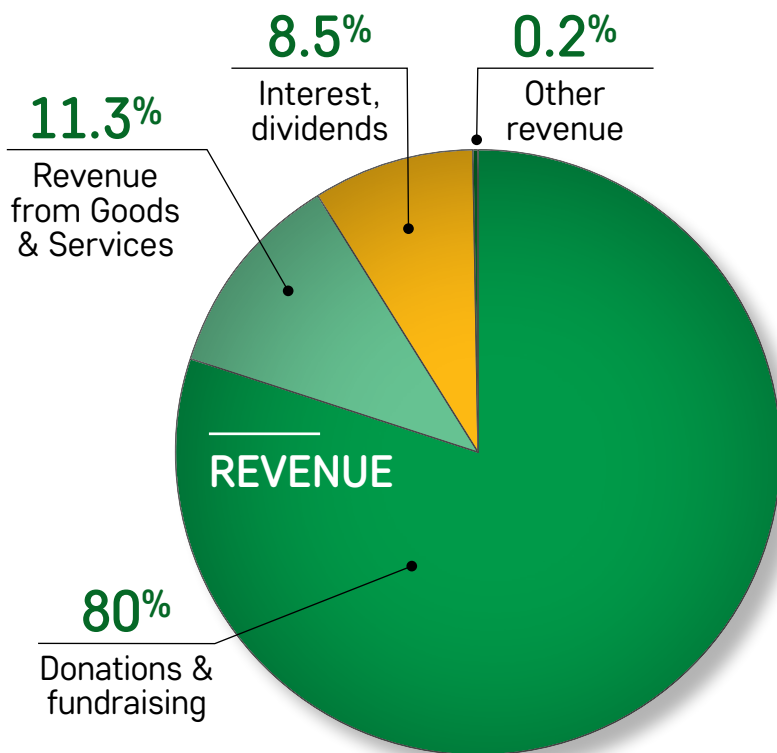
Volunteer and employee related costs	\$577,565
Costs related to providing goods or service	\$148,284
Other expenses	\$141,143
<b>Total expenses</b>	<b>\$866,992</b>

**SURPLUS (Deficit) for the year** (\$319,271)





# Financial PERFORMANCE



To view the complete set of the audited accounts please click [here](#)



**MobilityDogs®**

LIFE CHANGING LOYALTY

**P.** +64 9 836 6238 **E.** [info@mobilitydogs.co.nz](mailto:info@mobilitydogs.co.nz) [mobilitydogs.co.nz](https://mobilitydogs.co.nz)

NZ Charities Registration Number: CC24410